



# STRETCH

beyond boundaries

SOS presents

a 45mm thick partition based  
multi-role furniture system

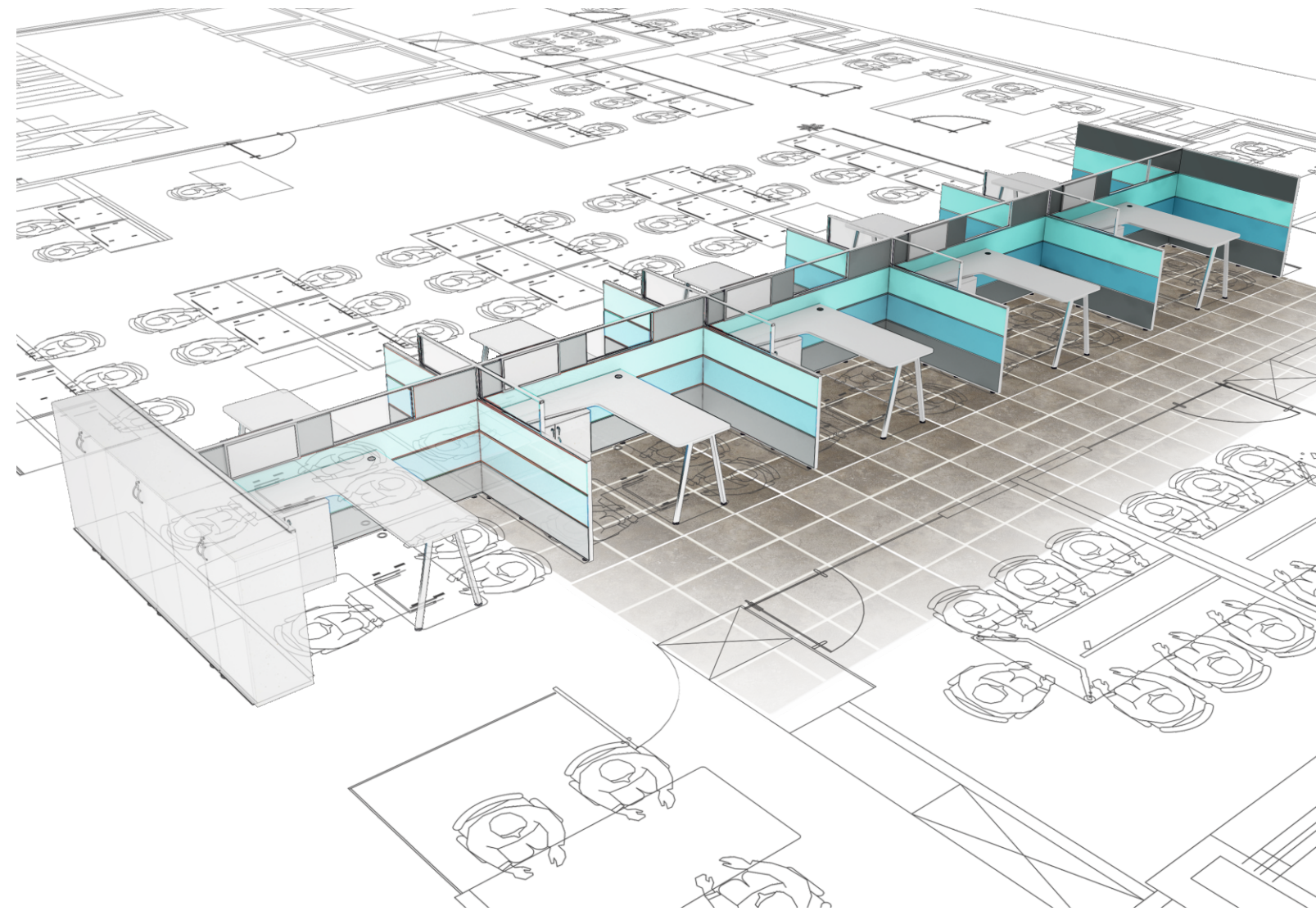
02

03

STRETCH

beyond boundaries...

Today's work environment is rapidly shifting to a participatory, open environment. It allows for creative thinking to prosper in collaborative endeavours, design thinking in diverging and decisive thinking in converging courses. These altering paradigms demand liberation, freedom of places and governance in spatial allowances. An open design paves path for an open organization.



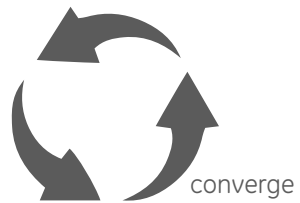
### benching



an effective configuration for space management & teamwork - excellent for communication and collaboration.  
- a simple solution with STRETCH.



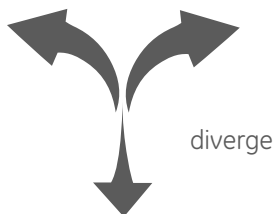
### desking



sophisticated, flexible and a dynamic hierarchal environment is build with privacy, elegance and functionality  
- easily adapted with STRETCH.



### workstations



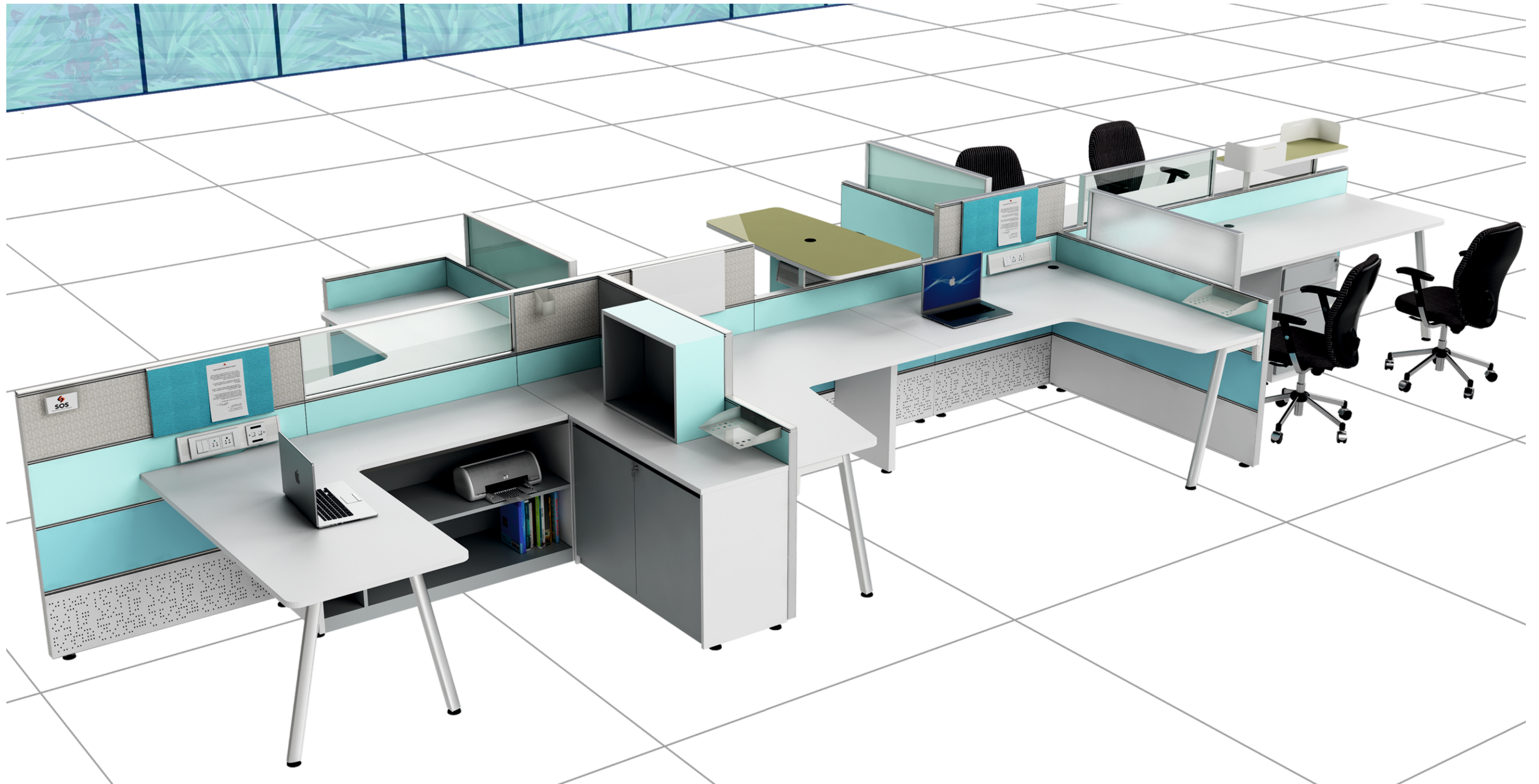
private, focused, functional and ergonomic workstations embellished with all necessary accessories for performance  
- offered seamlessly by STRETCH.

STRETCH aims to aid planners, architects, designers and decision makers to break away from the predictable and dependence on repetitive arrangement of desks and cabinets or the "Standard Workstation Typology" by altering the very definition of limits and boundaries of a modular system. This unique concept not only allows endless combinations for those same desks and cabinets, it also is equipped to create a completely new architecture and aesthetic.



ATTACH, MOVE, RECREATE... UNCONDITIONALLY

STRETCH



STRETCH allows openness based on the theoretical and mental collaboration of the planners. The system starts with a 'narrow panel based spinal axis' and then goes on to spray 'working spots' with different components that scale freely while connecting to the 'spine'. The spinal axis is a partition without any vertical division usually seen in a partition system.

This allows all the components to attach and move freely on it. A few intelligent set of joiners can mount all functional components to the axis to form any arrangement at the will of the planner to suit any requirement. All accessorial components also are designed to move along the axis at will, thus ensuring a holistic open system.

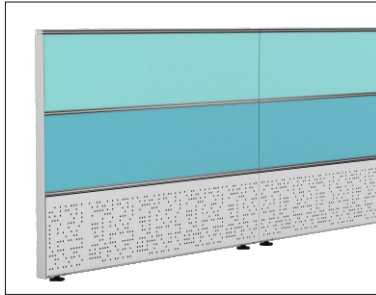


COMPONENTS

Designing with the STRETCH will encourage planners to define the task and then visualize the alternating needs of every person, group or team, rather than defining the work modes as the focus for layout. This way, instead of planning departments, the focus would be on planning spaces for activities and allowing traffic to move around related task zones only, thus automatically generating a participatory environment.

06

Panels



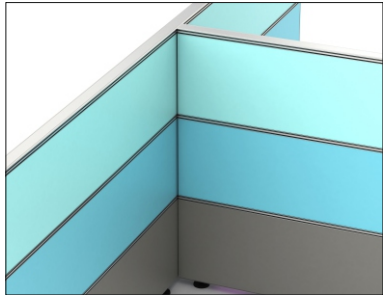
Composite Panel



Common Trims and End Cap



Re-mountable Electrical Panel



Return Composite Frame

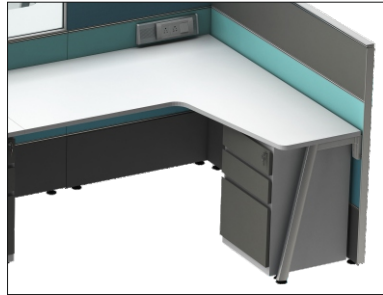
Tables



Runner Table



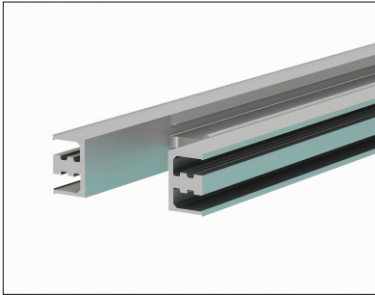
Peninsular Table



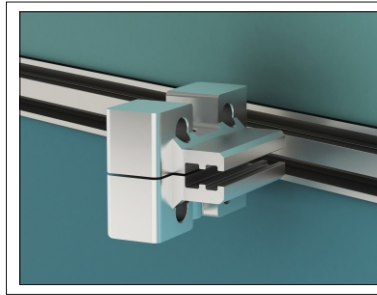
Corner Table

07

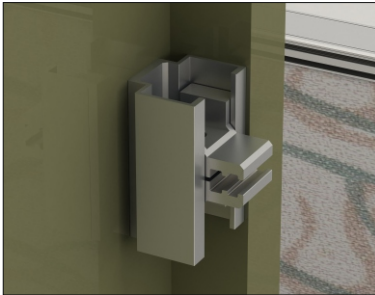
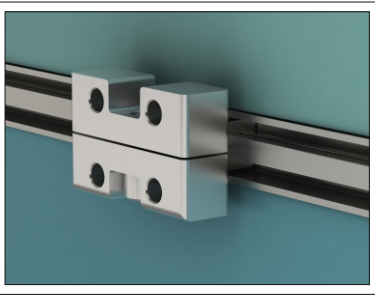
Interactive Joineries



Extruded Mid-Bar



Die-casted Pinch Clips



Minor Pinch Clip



Universal Joint



Support Bracket with ABS Cap

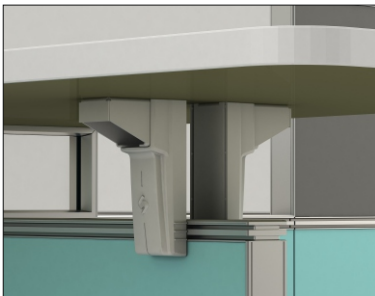
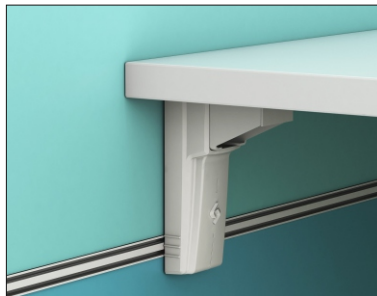


Table Support Bracket



Cantilever Bracket

Legs and Supports



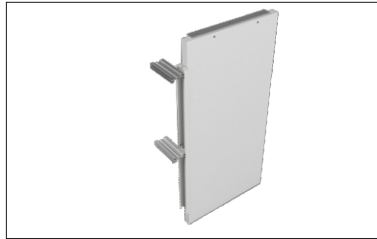
Fusion Leg mounted on Mid-Bar



Fusion Leg Construction



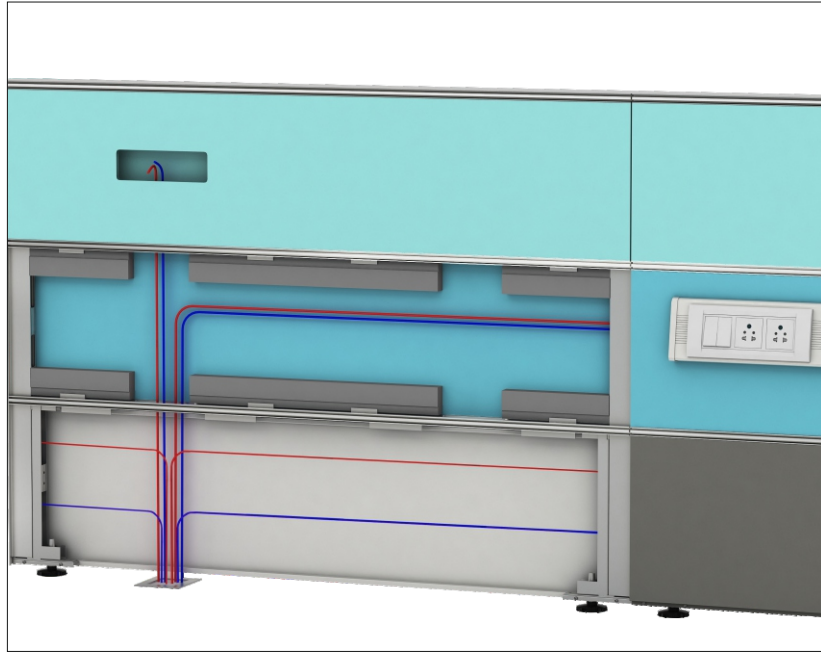
Leg Leveller



Gable End with Minor Pinch Clip

08

Electrical and Wire Management



Electrical Routing



Front mount switch plate



Concealed mount switch plate

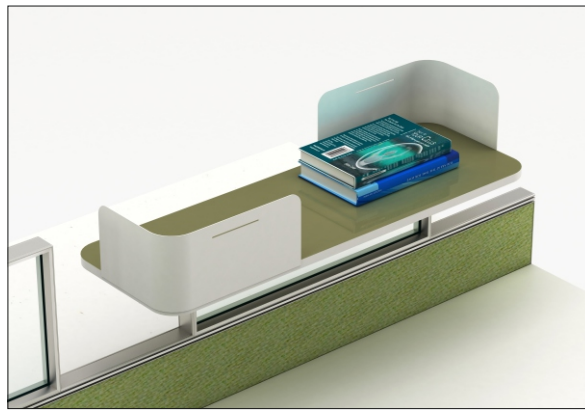
Integrated Cabinets



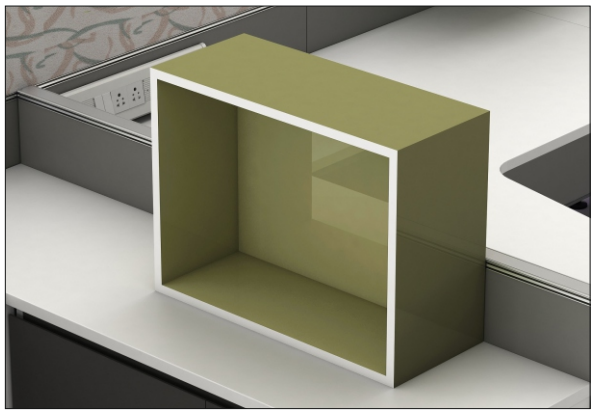
Integrated Storage



Integrated Open Shelf with CPU Space



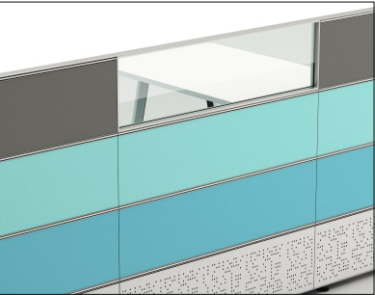
Partition Mounted Open Shelf with Book Holder



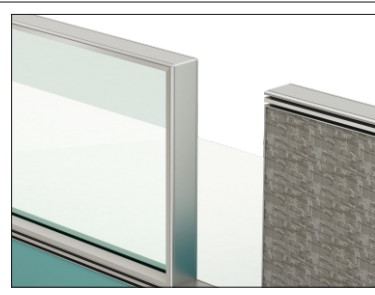
Partition Mounted Caddy

09

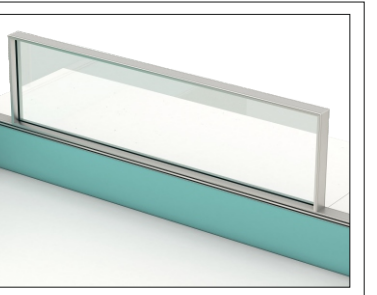
Accessories



Integrated Glass Partition



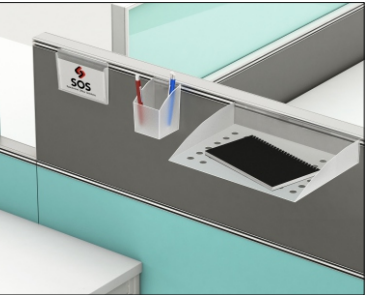
Floating Glass Partition



Add-on Marker Board



Add-on Pinup Board



Mid-Bar Mounted Desktop Accessories

Stretch offers many more add-on components like these, which can be positioned as per the requirement of the designer or decision maker. All components can move along the Mid-Bar unrestricted.

STRETCH is an elegant, sleek, simplified, intelligent partition based modular system with an array of simple components and an intelligent joinery system. It is a tool to create open work environments that are resilient, relevant, readily deploy able, infinitely variable and timeless - adaptable to the fluid need of today's organizations.

STRETCH



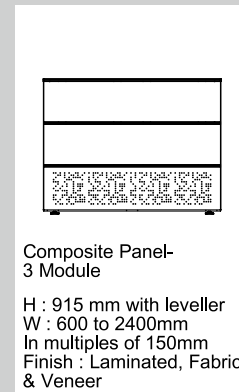
## SPECIFICATIONS

10

11

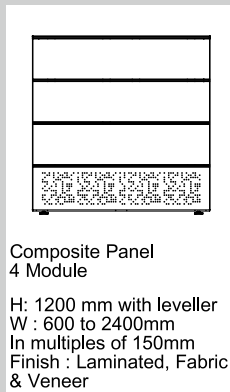
STRETCH

### Panels



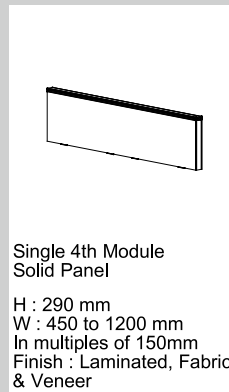
Composite Panel- 3 Module

H : 915 mm with leveller  
W : 600 to 2400mm  
In multiples of 150mm  
Finish : Laminated, Fabric & Veneer



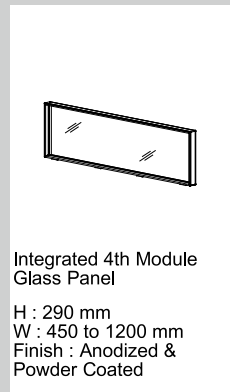
Composite Panel 4 Module

H: 1200 mm with leveller  
W : 600 to 2400mm  
In multiples of 150mm  
Finish : Laminated, Fabric & Veneer



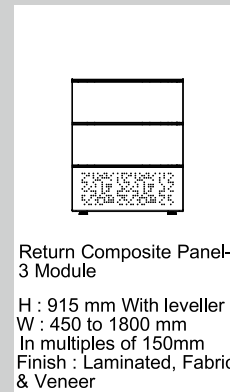
Single 4th Module Solid Panel

H : 290 mm  
W : 450 to 1200 mm  
In multiples of 150mm  
Finish : Laminated, Fabric & Veneer



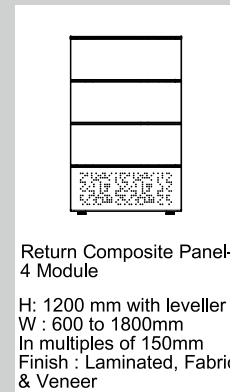
Integrated 4th Module Glass Panel

H : 290 mm  
W : 450 to 1200 mm  
Finish : Anodized & Powder Coated



Return Composite Panel- 3 Module

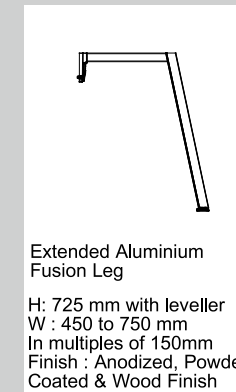
H : 915 mm With leveller  
W : 450 to 1800 mm  
In multiples of 150mm  
Finish : Laminated, Fabric & Veneer



Return Composite Panel- 4 Module

H: 1200 mm with leveller  
W : 600 to 1800mm  
In multiples of 150mm  
Finish : Laminated, Fabric & Veneer

### Legs & Connectors



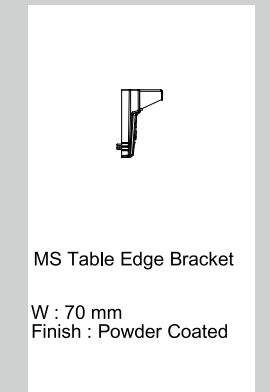
Extended Aluminium Fusion Leg

H: 725 mm with leveller  
W : 450 to 750 mm  
In multiples of 150mm  
Finish : Anodized, Powder Coated & Wood Finish



MS Cantilever Bracket

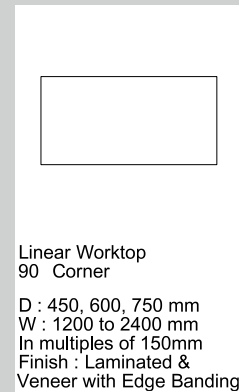
W : 300 mm  
Finish : Powder Coated



MS Table Edge Bracket

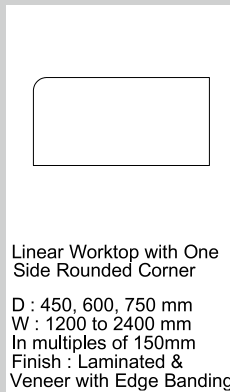
W : 70 mm  
Finish : Powder Coated

### Table Tops & Gables



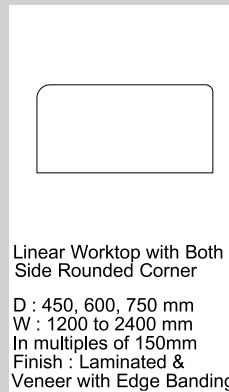
Linear Worktop 90° Corner

D : 450, 600, 750 mm  
W : 1200 to 2400 mm  
In multiples of 150mm  
Finish : Laminated & Veneer with Edge Banding



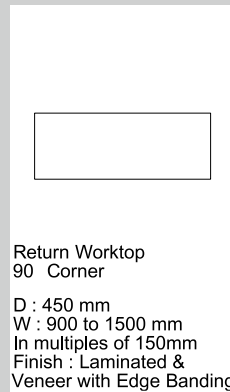
Linear Worktop with One Side Rounded Corner

D : 450, 600, 750 mm  
W : 1200 to 2400 mm  
In multiples of 150mm  
Finish : Laminated & Veneer with Edge Banding



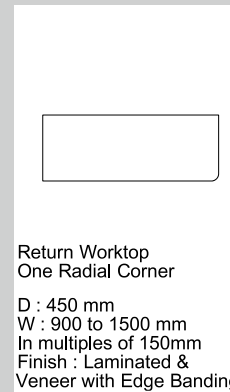
Linear Worktop with Both Side Rounded Corner

D : 450, 600, 750 mm  
W : 1200 to 2400 mm  
In multiples of 150mm  
Finish : Laminated & Veneer with Edge Banding



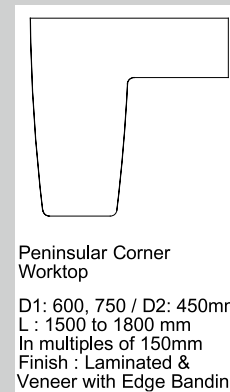
Return Worktop 90° Corner

D : 450 mm  
W : 900 to 1500 mm  
In multiples of 150mm  
Finish : Laminated & Veneer with Edge Banding



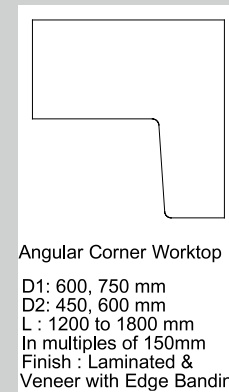
Return Worktop One Radial Corner

D : 450 mm  
W : 900 to 1500 mm  
In multiples of 150mm  
Finish : Laminated & Veneer with Edge Banding



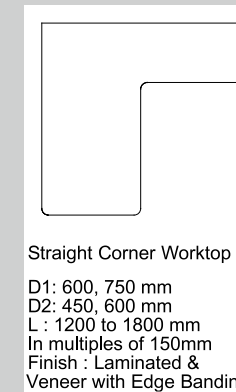
Peninsular Corner Worktop

D1: 600, 750 / D2: 450mm  
L : 1500 to 1800 mm  
In multiples of 150mm  
Finish : Laminated & Veneer with Edge Banding



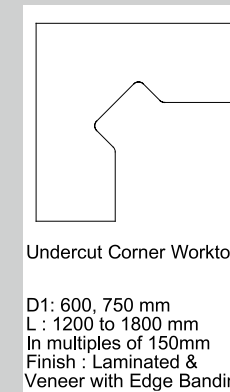
Angular Corner Worktop

D1: 600, 750 mm  
D2: 450, 600 mm  
L : 1200 to 1800 mm  
In multiples of 150mm  
Finish : Laminated & Veneer with Edge Banding



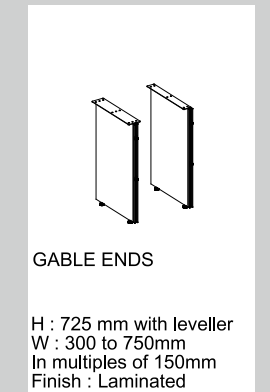
Straight Corner Worktop

D1: 600, 750 mm  
D2: 450, 600 mm  
L : 1200 to 1800 mm  
In multiples of 150mm  
Finish : Laminated & Veneer with Edge Banding



Undercut Corner Worktop

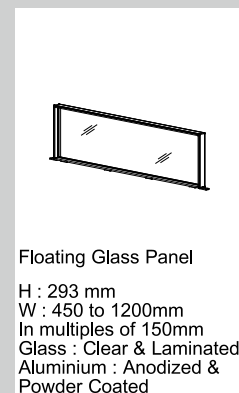
D1: 600, 750 mm  
L : 1200 to 1800 mm  
In multiples of 150mm  
Finish : Laminated & Veneer with Edge Banding



GABLE ENDS

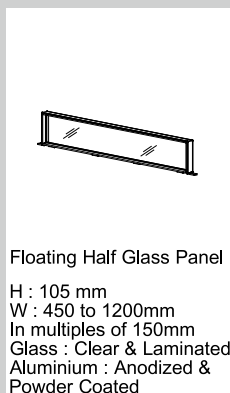
H : 725 mm with leveller  
W : 300 to 750mm  
In multiples of 150mm  
Finish : Laminated

### Panel Mounted Accessories



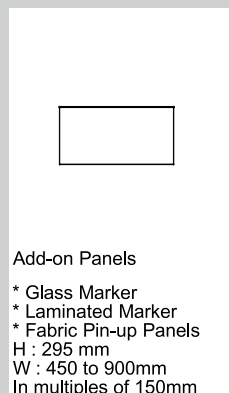
Floating Glass Panel

H : 293 mm  
W : 450 to 1200mm  
In multiples of 150mm  
Glass : Clear & Laminated  
Aluminium : Anodized & Powder Coated



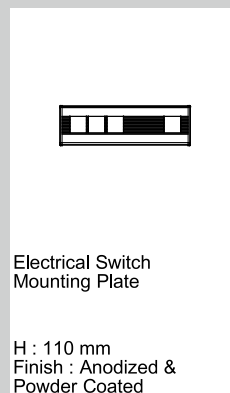
Floating Half Glass Panel

H : 105 mm  
W : 450 to 1200mm  
In multiples of 150mm  
Glass : Clear & Laminated  
Aluminium : Anodized & Powder Coated



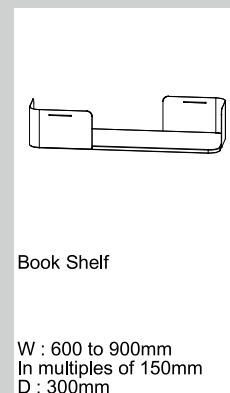
Add-on Panels

\* Glass Marker  
\* Laminated Marker  
\* Fabric Pin-up Panels  
H : 295 mm  
W : 450 to 900mm  
In multiples of 150mm



Electrical Switch Mounting Plate

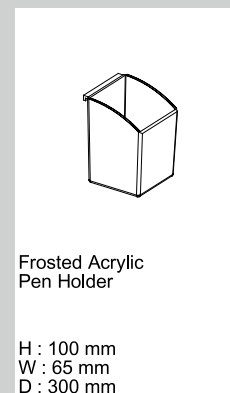
H : 110 mm  
Finish : Anodized & Powder Coated



Book Shelf

W : 600 to 900mm  
In multiples of 150mm  
D : 300mm

### Desktop Accessories



Frosted Acrylic Pen Holder

H : 100 mm  
W : 65 mm  
D : 300 mm



Frosted Acrylic Name Signage

H : 90 mm  
W : 135 mm  
D : 8 mm

### Features

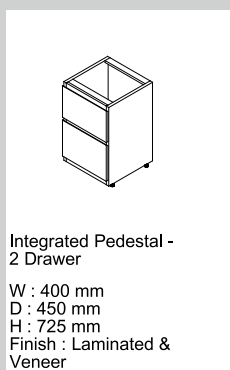
- 45mm thick partition based system with horizontal modules at 300mm
- Extruded aluminium Mid-Bar rail with aluminium diecasted connectors
- Removable MS or MDF bottom tiles for electrical access
- 15mm levellers, 25mm floating panels.
- Capable of forming up to 900mm partitions or 1200mm partitions
- Workstation heights 750mm standard
- 25mm particle board laminated and PVC edge banded worktops
- Extruded aluminium legs with diecasted joiners.

### Cabinets



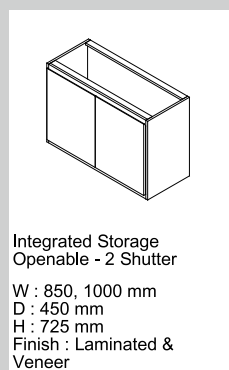
Integrated Pedestal - 3 Drawer

W : 400 mm  
D : 450 mm  
H : 725 mm  
Finish : Laminated & Veneer



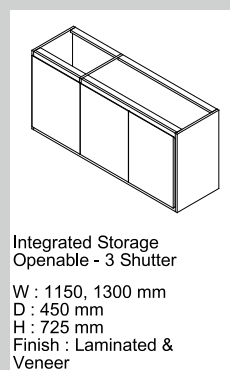
Integrated Pedestal - 2 Drawer

W : 400 mm  
D : 450 mm  
H : 725 mm  
Finish : Laminated & Veneer



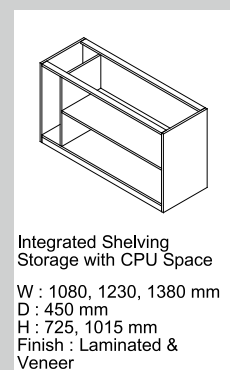
Integrated Storage Openable - 2 Shutter

W : 850, 1000 mm  
D : 450 mm  
H : 725 mm  
Finish : Laminated & Veneer



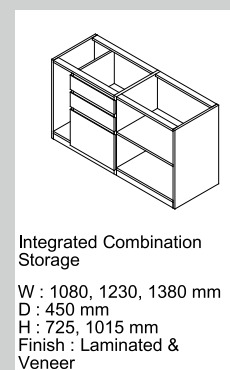
Integrated Storage Openable - 3 Shutter

W : 1150, 1300 mm  
D : 450 mm  
H : 725 mm  
Finish : Laminated & Veneer



Integrated Shelving Storage with CPU Space

W : 1080, 1230, 1380 mm  
D : 450 mm  
H : 725, 1015 mm  
Finish : Laminated & Veneer



Integrated Combination Storage

W : 1080, 1230, 1380 mm  
D : 450 mm  
H : 725, 1015 mm  
Finish : Laminated & Veneer

Stretch is designed by Somnath Dutta Roy an independent product designer, alumni of the National Institute of Design, Ahmedabad and co founder of IdeaMatrix- a Mumbai design firm, consulting a variety of elite clientele in the fields of product development, brand building and interior architecture for 25 years.





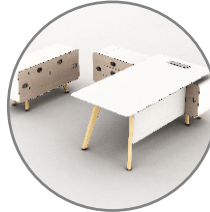
# workplace furniture



**Workstation  
Systems**



**Partition  
Walls**



**Cabin  
Solutions**



**Chairs &  
Seating**



**Worksmart  
Furniture**



## SOS

Spacewood  
Office  
Solutions

**Corporate Office & Plant:** SZ-13, Butibori MIDC Area, Nagpur – 441122  
Phone: 07103 297601 / 297602, Fax: 07104 232139  
Email: sos@spacewood.in, Web: www.sosoffice.in

### Our Presence:

- Nagpur:** SZ-13, Butibori MIDC Area, Nagpur – 441122  
Mobile: +91 80077 72456, Email: ssa@spacewood.in
- Mumbai:** B/702, Pramukh Plaza, Cardinal Gracious Road, Chakala, Andheri East, Mumbai – 400093  
Mobile: +91 80077 72461, Phone: +91 22 2838 4488/77, Email: vdp@spacewood.in
- Pune:** Nandini, Bunglow No-3, Lane-2C, Survey No-130, Ram Indu Park, Baner Balewadi Road, Pune – 411045  
Mobile: +91 80071 77334, Phone: +91 20 6500 0348, Email: sameerdeore@spacewood.in
- Delhi:** 2nd floor, Plot no.-14, Rekha Enclave, Mansarovar Garden, Kirti Nagar, New Delhi – 110015  
Mobile: +91 85271 66991, Phone: +91 11 4606 6995, Email: sanjaygupta@spacewood.in
- Chennai:** Plot No.44/18, 3rd floor, Krishnashree Enclave, 1st Main Road, Gandhi Nagar, Adyar, Chennai – 600020  
Mobile: +91 91766 20989, Phone: +91 44 2441 4188, Email: vignesh@spacewood.in
- Hyderabad:** 1-57/69/1/134,66,72, Gachibowli Main Road, Serilingampally, Hyderabad – 500032  
Mobile: +91 88869 97345, Phone: +91 40 2300 1050/60/70, Email: venkatesh@spacewood.in
- Kolkata:** Arcadia Center, 31, Dr. Ambedkar Sarani, Topsia, Opp. Vishwakarma Building, Kolkata – 700046  
Mobile: +91 80077 72456, Phone: +91 33 2285 0071/72, Email: ssa@spacewood.in
- Bengaluru:** 1st Floor, 324/1, 1st Cross, Lal Bahadur Nagar, B. Channasandra Main Road, Bengaluru – 560043  
Mobile: +91 90080 60740, Phone: +91 80 4149 5865, Email: srini@spacewood.in
- Indore:** Mobile: +91 80077 74792, Email: officesales1@spacewood.in